

# INTIMATE PARTNER VIOLENCE IN THE LGBTQ+ COMMUNITY: PERSPECTIVES FROM THE BENCH

LAVENDER LAW, 2021

1

## PANEL



Hon. Rachel Bell (she/her), General  
Sessions Court Judge, Nashville, TN



Hon. Christopher Bowen (he/him),  
Superior Court Judge, Richmond, CA



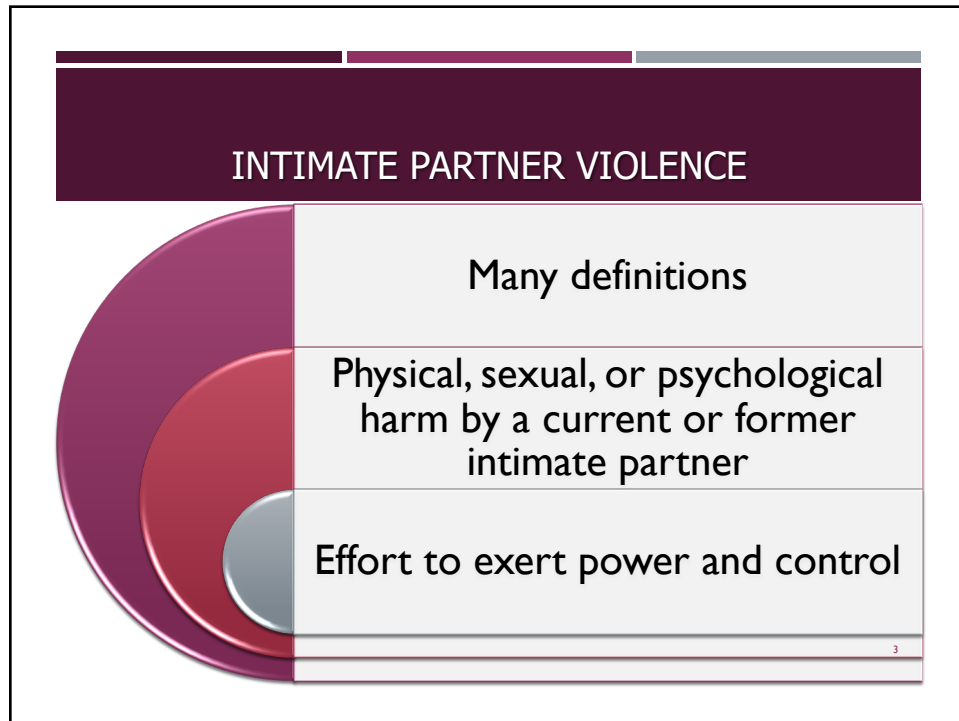
Hon. Julie Emede (she/her), Superior  
Court Judge, San Jose, CA



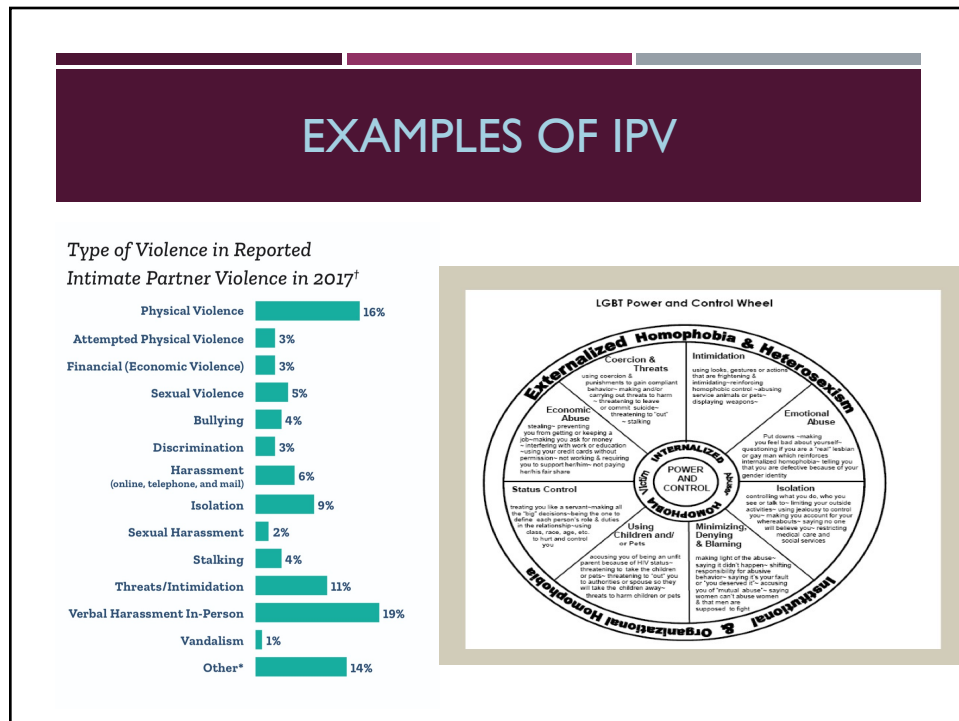
Hon. Amy Sakalauskas (she/her),  
Provincial Court Judge, Halifax, NS

2

2



3



4

## BY THE NUMBERS = LGB

Table I. Prevalence of lifetime intimate partner violence and intimate partner sexual violence in the 2010 National Intimate Partner and Sexual Violence Survey (NISVS), by sexual orientation and gender

	Lifetime Intimate Partner Violence		Lifetime Intimate Partner Sexual Violence	
	Men	Women	Men	Women
General Population	28.1%	32.9%	8.0%	15.9%
Heterosexual	28.7%	32.3%	*	15.3%
Bisexual	37.3%	56.9%**	*	40.0%*
Gay/Lesbian	25.2%	40.4%	*	**

\* Estimate not reported    \*\* Estimate not reported; sample size too small    ^ Statistically significant difference in prevalence of IPV between bisexual and heterosexual women ( $p < .05$ )

Intimate Partner Violence and Sexual Abuse Among LGBT People: A Review of Existing Research (November 2015)  
THE WILLIAMS INSTITUTE

5

## BY THE NUMBERS – TRANS AND NONBINARY

Limited number of studies

Range for Transpersons for IPV = 54%; IPSV = 47%

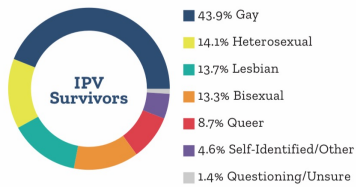
Nonbinary persons: Very limited information – Need studies!

6

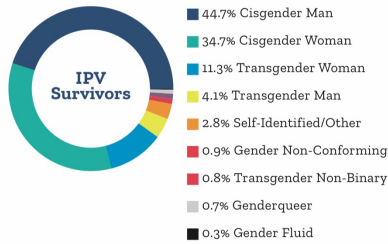
6

## BY THE NUMBERS

### Sexual Orientation



### Gender Identity

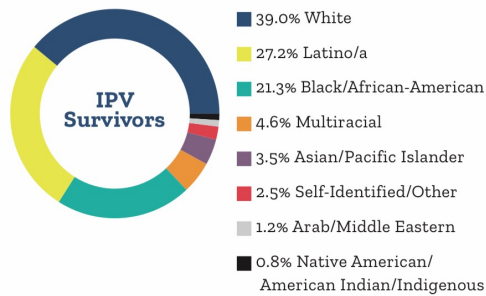


National Coalition of Anti-Violence Programs, Lesbian, Gay, Bisexual, Transgender, Queer, and HIV-Affected Hate and Intimate Partner Violence in 2017

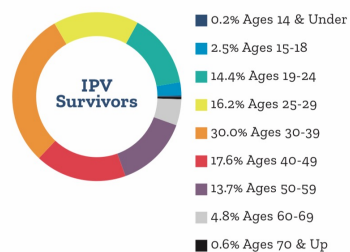
7

## BY THE NUMBERS

### Race and Ethnicity

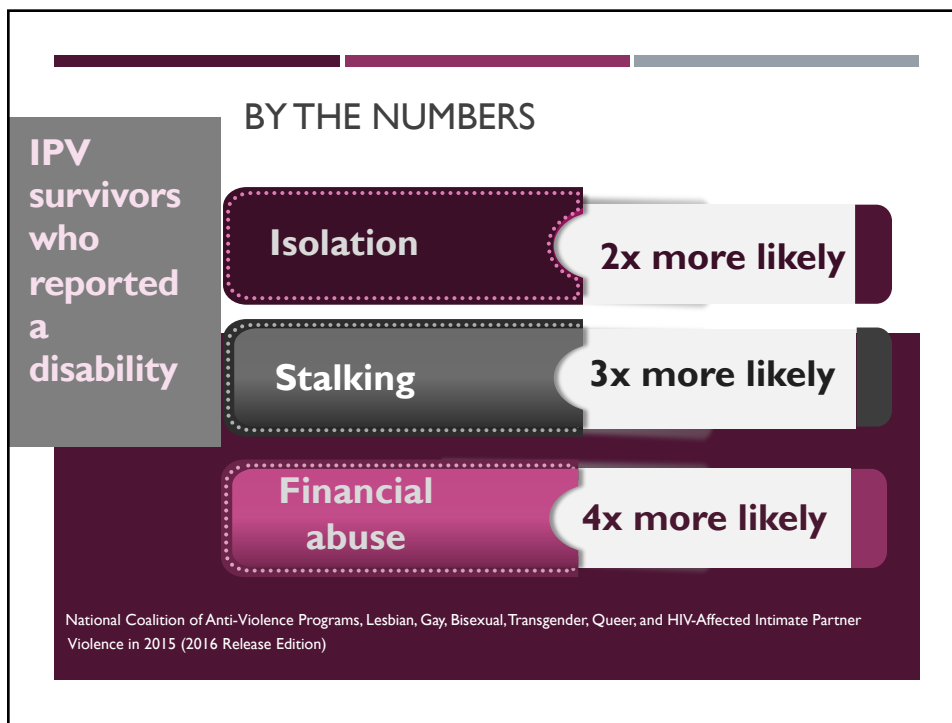


### Age

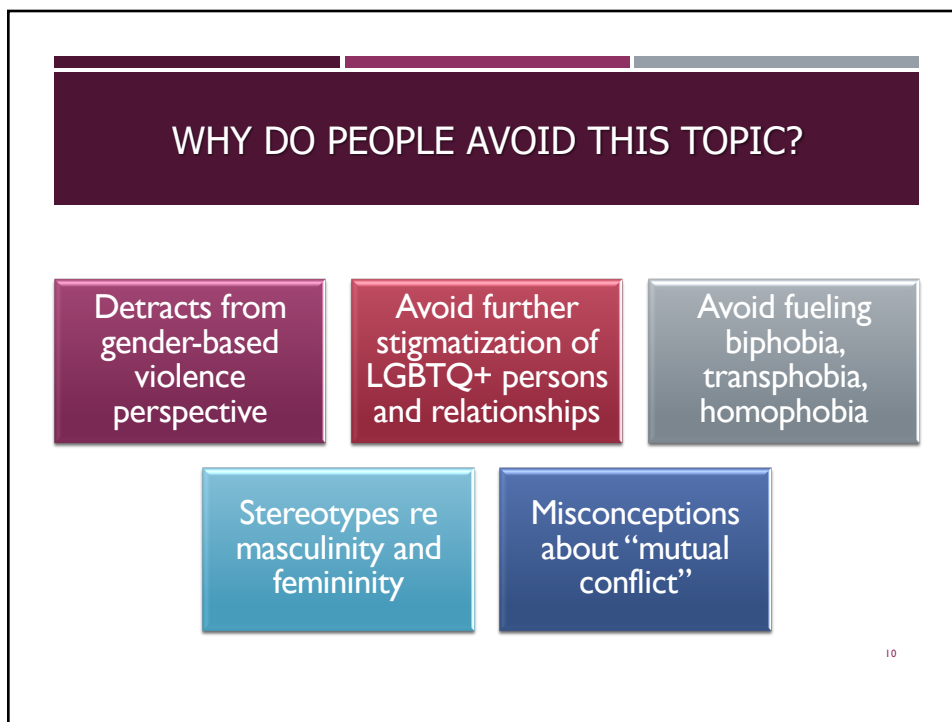


National Coalition of Anti-Violence Programs, Lesbian, Gay, Bisexual, Transgender, Queer, and HIV-Affected Hate and Intimate Partner Violence in 2017

8



9



10

## OUR DISCUSSION

Special considerations in LGBTQ+ IPV

Particularly vulnerable groups

Barriers in accessing services

What you can do

11

## CONTACT US!

- Hon. Rachel Bell: [judgerachelbell@gmail.com](mailto:judgerachelbell@gmail.com)
- Hon. Christopher Bowen:  
[cbowe@contracosta.courts.ca.gov](mailto:cbowe@contracosta.courts.ca.gov)
- Hon. Julie Emede: [jemedede@scscourt.org](mailto:jemedede@scscourt.org)
- Hon. Amy Sakalauskas:  
[asakalauskas@judicom.ca](mailto:asakalauskas@judicom.ca)

12